

DANGEROUS DRUGS BOARD EXTENSION OFFICE
 6TH Floor, South Insula Condominium Complex, Timog Avenue
 Quezon City, Metro Manila

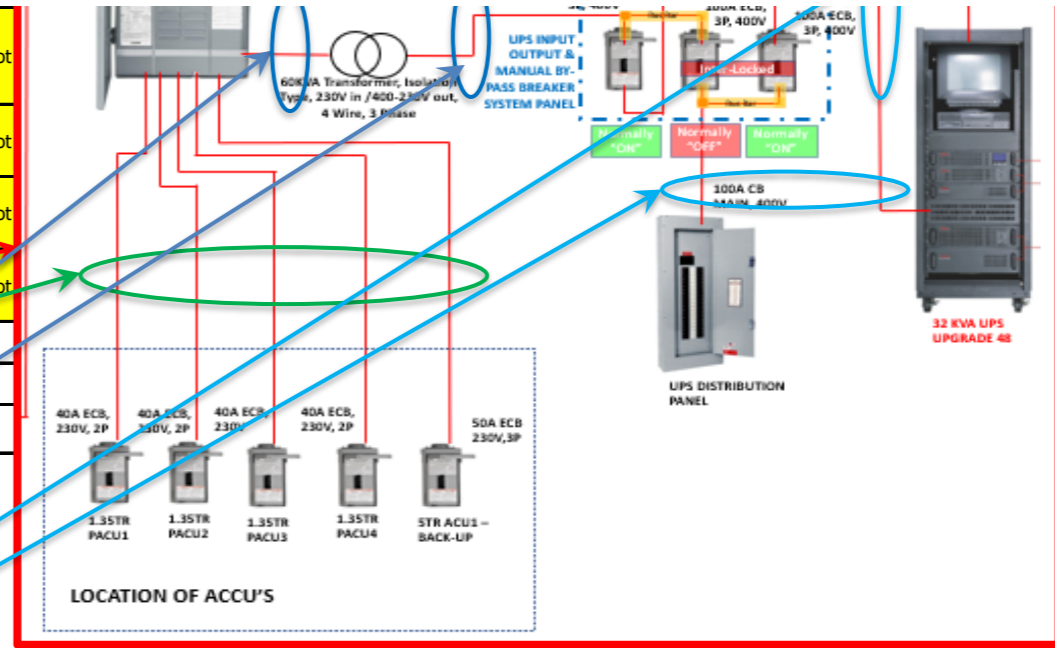
PRICED DETAILED ESTIMATES											
ITEM NO.	DESCRIPTION	QUANTITY	UNIT	DIRECT COST				TOTAL MARK UP		5% VAT	TOTAL
				MATERIAL	LABOR	EQUIPMENT	TOTAL	%	VALUE		
I	MASONRY										
1	CHB laying	32	sq.m.								
2	Plastering of CHB wall and concrete columns and beams along glass panel	215	sq.m.								
II	DRY WALL PARTI	85	sq.m.								
III	PAINTING										
1	Masonry paint	279	sq.m.								
2	Dry wall paint	175	sq.m.								
3											
4	Doors	8.4	sq.m.								
IV	CEILING WORKS										
1	acoustic ceiling	233	sq.m.								
2											
V	DOORS/WINDOWS										
1	D1	1	sets								
2	D7	1	set								
3	D8	2	set								
VI	FLOORING										
1	Homogeneous tiles (233	sq.m.	SHOULD BE ANTI- STATIC TILES INSIDE THE DATA CENTER							
2	Floor topping	233	sq.m.								
3	Waterproofing/insulation of flooring (data center)Elastomeric	38	sq.m.	not included	not included	not included	not included	not included	not included	not included	not included

CONSTRUCTION OF
DANGEROUS DRUGS BOARD EXTENSION OFFICE
 6TH Floor, South Insula Condominium Complex, Timog Avenue
 Quezon City, Metro Manila

VII	Fire Sprinkler										
1	Permanent plugging of fire sprinkler	3	sets								
2	Relocation of existing	24	heads								
VIII	STORAGE SHELVES/CABINETS and LOCKERS with PAINTING	36.48	sq.m.	not included	not included	not included	not included	not included	not included	not included	not included
	SUB-TOTAL:			-	-	-	-	-	-	-	-
IX	MECHANICAL										



1	Daikin Ceiling Suspended "Inverter" type 4.0hp	1	unit	not included	not included	not included	not included	not	
2	Daikin Ceiling Cassete "Inverter" type 4.0hp	3	units	not included	not included	not included	not included	not	
3	Daikin Wall Mounted "Inverter" type 1.5hp	2	units	not included	not included	not included	not included	not	
4	Daikin Wall Mounted "Inverter" type 2.5hp	1	unit	not included	not included	not included	not included	not	
	SUB-TOTAL:			-	-	-	-		
X	ELECTRICAL								
2	Circuit Breakers & Panelboards	ATTACHED ARE THE REQUIRED PANELBOARDS/CIRCUIT BREAKERS INSIDE THE DATA CENTER							
2.1	Wires/piping/roughing-ins/breakers from electrical room panel up to new 2 units back up aircon (PACU1-PACU4 & 1 back up unit)	5	sets						
2.2	Wires/piping/roughing-ins/breakers from isolation transformer to by-pass manual transfer switches	3	sets						
2.3	Wires/piping/roughing-ins/breakers from by-pass manual transfer switches to UPS distribution Panel & UPS equipment	1	set						



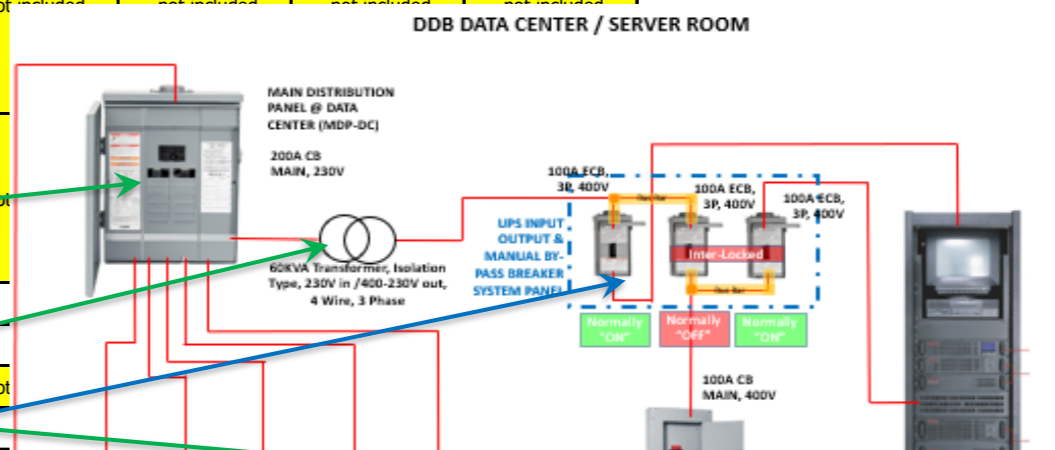
CONSTRUCTION OF

DANGEROUS DRUGS BOARD EXTENSION OFFICE

6TH Floor, South Insula Condominium Complex, Timog Avenue

Quezon City, Metro Manila

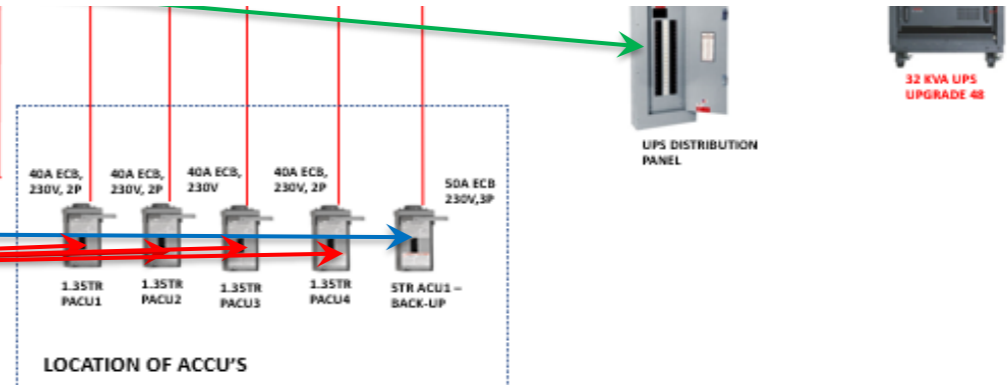
2.4	Wires/piping/roughing-ins/breakers from Genset to automatic transfer switches (ATS) & to MDP-DC Main Distribution Panel of Data Center	1	set	not included	not included	not included	not included	not
2.5	Wires/piping/roughing-ins/breakers from Main Building Service Entrance to automatic transfer switches (ATS)	1	set	not included	not included	not included	not included	not
2.6	Panel - MDP-DC	1	set					
2.7	Panel - UPS Distribut	1	set					
2.8	Panel - Aircon Distrib	1	set	not included	not included	not included	not included	not
2.9	250A, 3P,NEMA-1 Er	1	sets					



2.10	ATS	1	set	not included	not included	not included	not included	not
2.11	Generator Set	1	set	not included	not included	not included	not included	not
2.12	60 KVA Isolation Tra	1	set					
2.13	3x100A,3P,400V,NEE	1	set					
2.14	50A,3P,NEMA 3R En	1	set					
2.15	250A,3P,NEMA-1 En	1	set	not included	not included	not included	not included	not
2.16	250A,3P,NEMA-1 En	1	set	not included	not included	not included	not included	not
3	Lighting Fixtures	38	sets					
4.1	Rotating fan	3	sets	not included	not included	not included	not included	
4.2	Fire extinguishers	10	sets	not included	not included	not included	not included	
4.3	Smoke Detector	1	lot					

UPS IOMBPS = UPS INPUT/OUTPUT MANUAL BYPASS PANEL IS A UNITIZED PANEL, 1 SET WITH 3 CIRCUIT BREAKERS

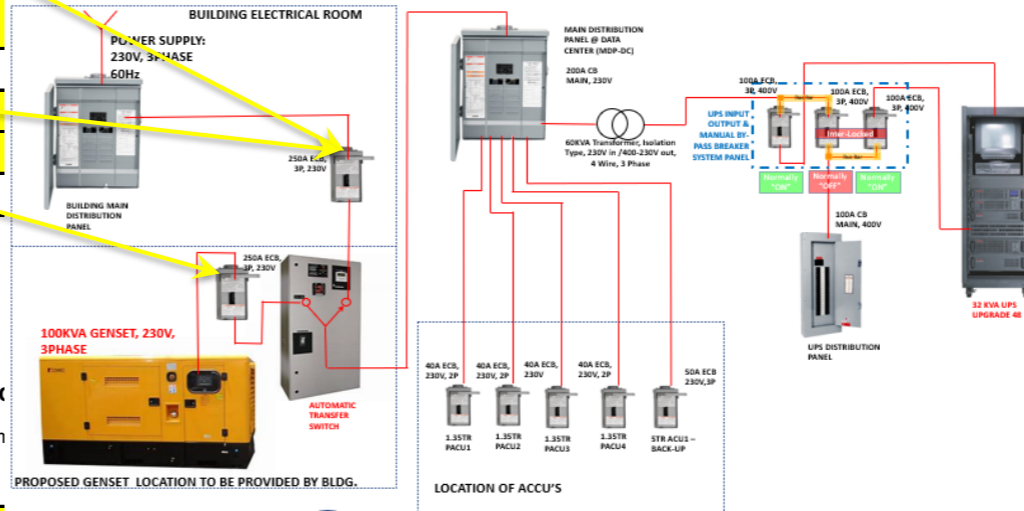
4 SETS OF 40A ECB, 230V, 2P FOR PACU#1 TO #4



LOCATION OF ACU'S

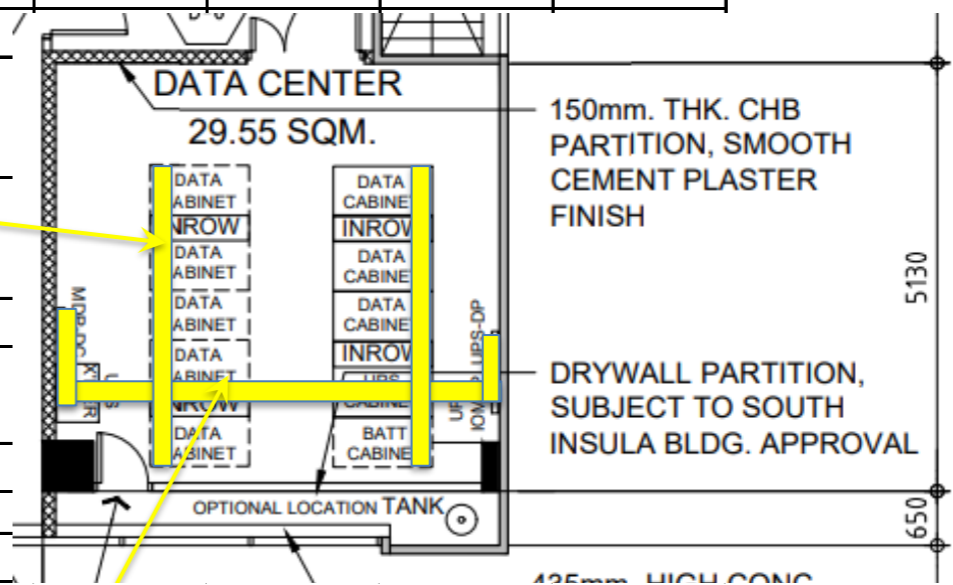
DDB DATA CENTER / SERVER ROOM

CONSTRUCTION OF
DANGEROUS DRUGS BOARD EXTENSION
 6TH Floor, South Insula Condominium Complex, Tin
 Quezon City, Metro Manila



ELECTRICAL SINGLE LINE DIAGRAM

4.4	Data Outlets	1 Lot	Infobahn						
4.5	Audio/Video/HDMI p								
4.6	Projector, TV outlets								
4.7	Data cable								
4.8	HDMI cable								
4.9	Audio/Video/TV cabl								
4.10	Anti Static Vinyl	33	sqm						
5	LPPN circuit breaker	1	set						
6	wirings, conduits, boxes, etc, from electrical room to main bldg. tapping point	1	lot						
7	wirings, conduits, boxes, etc. for convenience outlets and lights (MISU ofc)	1	lot						
8	wiring devices, switch, c.o, f.o	1	lot						
9	wirings, conduits, boxes, etc. for MISU office ACU (7 units)	1	lot						
10	acu drain pipes for MISU ofc	1	lot						
11	Preliminaries:								
11.1	mobilization /demobilization	1	lot						



32 KVA UPS UPGRADE 48



32 KVA UPS UPGRADE 48

11.2	Temporary facilities,field office,electric and water,etc.	1	lot																	
11.3	supervision	1	lot																	
11.4	bldg/occupancy permits	1	lot																	
11.5	safety and health	1	lot																	
	SUB-TOTAL:																			
	GRAND TOTAL																			

OVERHEAD CABLE TRAY FOR POWER

5520

435mm. HIGH CONC. WINDOW SILL (EXISTING)